

# Single Axis Slider Units SU45/85

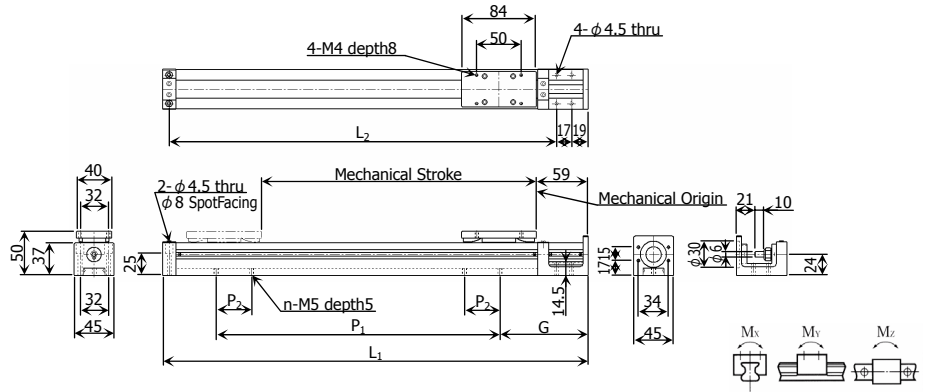
*Noise Reduction for Cancel of micro-Vibration*





**SU45 × 50 – 300 – MB42**

Model Number      Stroke      Motor Bracket  
 MB40: For □40 Motor  
 MB42: For □42 Motor



Unit : mm

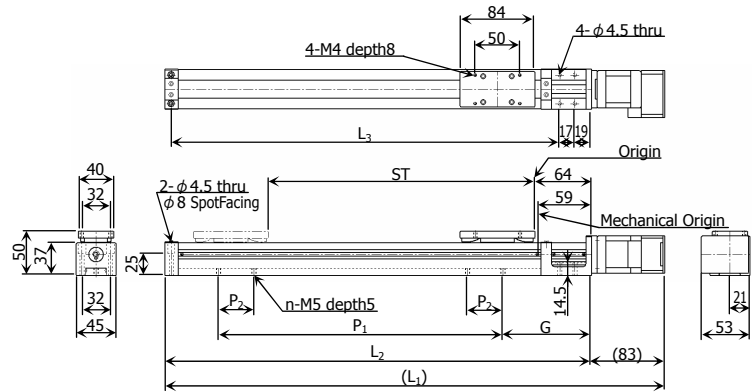
Stroke	Mechanical Stroke	L <sub>1</sub>	L <sub>2</sub>	G	P <sub>1</sub>	P <sub>2</sub>	n	Mass(kg)
100	110	280	237	100	120	-	2	1.1
150	160	330	287	105	160	-	2	1.2
200	210	380	337	110	200	40	4	1.3
250	260	430	387	115	240	40	4	1.4
300	310	480	437	100	320	40	4	1.6

Basic Dynamic Load Rating/Guides	Basic Static Load Rating/Guides	Allowable Moment/Guides	Lead Screw Diameter	Lead
4.35kN	6.35kN	Mx=9.8Nm, My=4.2Nm, Mz=4.2Nm	10mm	15mm
Initial Backlash	Accuracy Class	Screw Efficiency	Allowable Max. Thrust	Allowable Max. Speed
0mm	C10	0.8	370N	450mm/s



**SU45 × 50 – 250 – CM18**

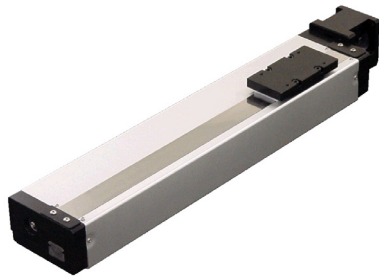
Model Number      Stroke      Motor



Unit : mm

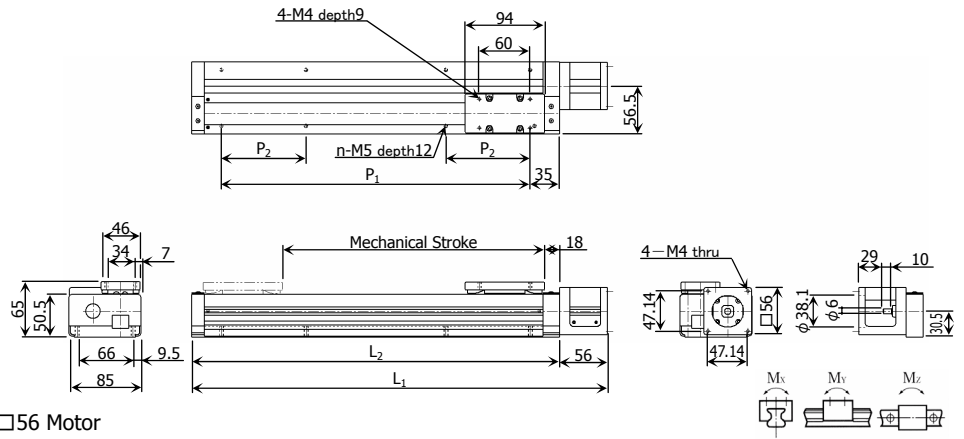
Stroke ST	Mechanical Stroke	L <sub>1</sub>	L <sub>2</sub>	L <sub>3</sub>	G	P <sub>1</sub>	P <sub>2</sub>	n	Mass(kg)
100	110	363	280	237	100	120	-	2	1.6
150	160	413	330	287	105	160	-	2	1.7
200	210	463	380	337	110	200	40	4	1.8
250	260	513	430	387	115	240	40	4	1.9
300	310	563	480	437	100	320	40	4	2.0

Rating Thrust	Max. Thrust	Max. Speed	Initial Backlash	Repeatability	Horizontal Transportable Mass
51N	126N	450mm/s	0mm	±0.02mm	5kg
Vertical Transportable Mass	Allowable Moment	Lead	Accuracy Class	Motor Power	Power Source
1.5kg	Mx=9.8Nm, My=4.2Nm, Mz=4.2Nm	15mm	C10	18W	DC24V



**SU85 × 65 - 300 - MB60**

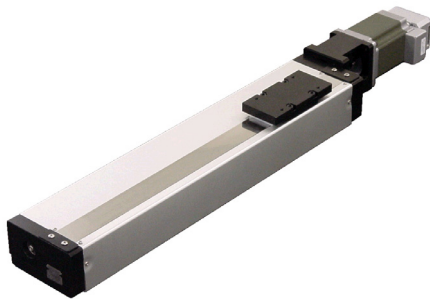
Model Number      Stroke      Motor Bracket  
 MB56: For □56 Motor  
 MB60: For □60 Motor



Unit: mm

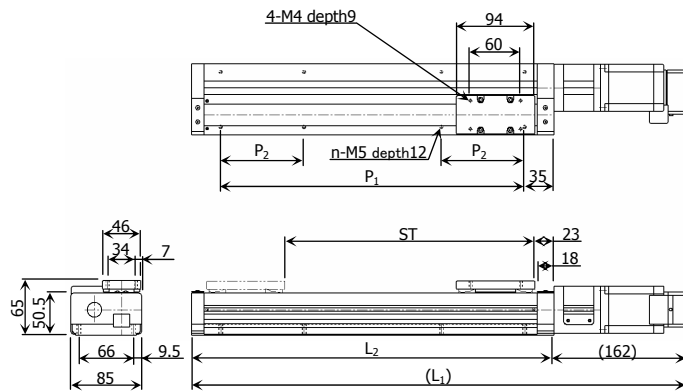
Stroke	Mechanical Stroke	L <sub>1</sub>	L <sub>2</sub>	P <sub>1</sub>	P <sub>2</sub>	n	Mass(kg)
100	110	291	235	165	-	4	1.6
150	160	341	285	215	-	4	2.2
200	210	391	335	265	80	8	2.7
250	260	441	385	315	80	8	3.3
300	310	491	435	365	80	8	3.9

Basic Dynamic Load Rating/Guides	Basic Static Load Rating/Guides	Allowable Moment/Guides	Lead Screw Diameter	Lead
13.5kN	21.9kN	M <sub>x</sub> =21Nm, M <sub>y</sub> =18Nm, M <sub>z</sub> =17Nm	12mm	18mm
Initial Backlash	Accuracy Class	Screw Efficiency	Allowable Max. Thrust	Allowable Max. Speed
0mm	C10	0.75	670N	360mm/s



**SU85 × 65 - 250 - CM30**

Model Number      Stroke      Motor



Unit: mm

Stroke ST	Mechanical Stroke	L <sub>1</sub>	L <sub>2</sub>	P <sub>1</sub>	P <sub>2</sub>	n	Mass(kg)
100	110	397	235	165	-	4	2.7
150	160	447	285	215	-	4	3.3
200	210	497	335	265	80	8	3.8
250	260	547	385	315	80	8	4.4
300	310	597	435	365	80	8	5.0

Rating Thrust	Max. Thrust	Max. Speed	Initial Backlash	Repeatability	Horizontal Transportable Mass
97N	227N	360mm/s	0mm	±0.02mm	9kg
Vertical Transportable Mass	Allowable Moment	Lead	Accuracy Class	Motor Power	Power Source
2.5kg	M <sub>x</sub> =21Nm, M <sub>y</sub> =18Nm, M <sub>z</sub> =17Nm	18mm	C10	30W	DC24V

### ○ Motor Torque without Option Motor

For necessary motor torque, apply following equation.

$$T = \frac{F \cdot \ell}{2\pi\eta} \quad (\text{N}\cdot\text{mm}) \quad F : \text{Thrust(N)} \quad \ell : \text{Lead(mm)} \quad \eta : \text{Screw Efficiency}$$

### ○ Specification of Option Motor

	For SU45×50	For SU85×65
Motor Power	18W	30W
Encoder	Incremental Magnetic Encoder (50000 pulses / Rotation)	
Control Method	Closed Loop Vector Control	
Power Source	DC24 ± 10%	
Input Supply Current Rated	1.5A/1.8A	2.6A/3.4A
Resolution (Pulse / Rotation)	From 200 to 50000 Set by parameter	
Environmental Conditions	0°C~+40°C / -20°C~+60°C (No Condensation condition)	
Operating / Storage Temperature		
Operating Humidity	Less than 90%RH	
Impact / Vibration	Less than 10G / Less than 1G	

### ○ Dimensions of Motor Bracket Please select a motor and a coupling under your responsibility after confirmation of dimensions and so on.

■ For □42 Motor

**Oriental Motor** Stepping Motor 2phases, 5phases  
**Sanyo Denki** Stepping Motor 2phases, 3phases, 5phases  
**Matsushita Electric Industrial** MINAS-S MUMS 30·50·100W  
**Tamagawa Seiki** Step Motor 2phases  
**Japan Servo** Stepping Motor 3phases

■ For □40 Motor

**Yasukawa Electric** Σ II SGMAH 30·50·100W Σ III SGMAS 50·100·150W  
**Mitsubishi Electric** J2-Super HC-KFS 50·100W J3 HF-KP 50·100W  
**Sanyo Denki** P3 30·50·100W  
**Tamagawa Seiki** TBL-i 30·50·100W

■ For □56 Motor

**Oriental Motor** Stepping Motor 2phases  
**Sanyo Denki** Stepping Motor 2phases, 3phases  
**Tamagawa Seiki** Step Motor 2phases  
**Japan Servo** Stepping Motor 3phases

■ For □60 Motor

**Yasukawa Electric** Σ II SGMAH 200·400W  
**Mitsubishi Electric** J2-Super HCKFS 200·400W J3 HF-KP 200·400W  
**Sanyo Denki** P3 200·400W  
**Tamagawa Seiki** TBL-i 100·200·400W

It can be altered (screw lead, stroke and so on). About detail, contact us please.

This specification can be modified without notice. Please acknowledge beforehand.

## QZAK SEIKO CO.,LTD.

Head Office 1550, Matoba, Kawagoe-City, Saitama Pref, Japan.  
 Yokohama Office 1-19-17, Katutaminami, Tuzuki-ku, Yokohama-City, Japan.  
 Osaka Office 2-3-12, Suehiro-cho, Yao-City, Osaka, Japan.  
 Keiji Office OFFICE21, 97-1, Kamimagari, Ritto-City, Shiga Pref, Japan.  
 Nagoya Office 1-1-3, Nishihioki, Nakagawa-ku, Nagoya-City, Japan.  
 Sendai Office 1-35, Minami-Machi, Rokuchonome, Wakabayashi-ku, Sendai-City, Japan.  
 Seoul RM No.301 IL Shin Bldg, 98-10 Kuro 6 Dong Kuro-ku Seoul 152-056 Korea  
 Singapore BIK66 Kallang Bahru #01-517, Singapore 330066  
 Malaysia Lot.18 The Highway Centre, Jalan 51/205, 46050 Petaling Jaya Selangor D.E. Malaysia  
 Shanghai 4F-D, 88 Taigu Road Waigaoqiao Free Trade Zone, Shanghai, China

Phone:049-233-7691 Fax: 049-233-7696  
 Phone:045-942-1951 Fax: 045-942-1955  
 Phone:072-994-8588 Fax: 072-922-5489  
 Phone:077-552-7311 Fax: 077-552-7312  
 Phone:052-322-1271 Fax: 052-322-1274  
 Phone:022-288-1585 Fax: 022-288-1586  
 Phone:02-864-7081 Fax: 02-864-7083  
 Phone:65-6295-8700 Fax: 65-6291-8700  
 Phone:60-3-7784-7717 Fax: 60-3-7784-7719  
 Phone:86-21-5868-2672 Fax: 86-21-5868-2675