

QZAK

SUPER LINEAR BEARINGS

Under Patent Application

SLH A, B, W series
SLG A, B, W series



No Impact Noises!! No Rolling Vibrations!!
QZAK offers a No-Jolt Super Silent.
Smooth Super Linear Motion!!

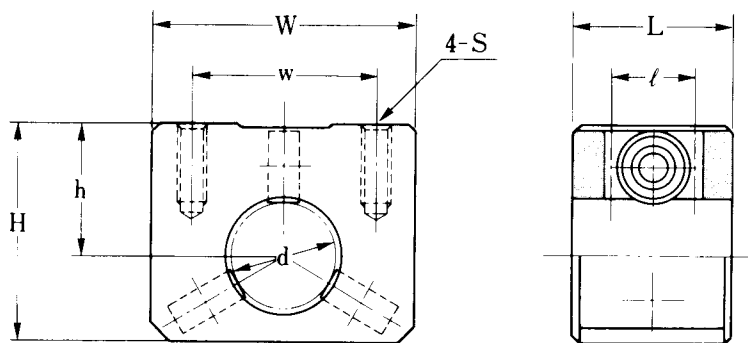


Table 104 : SLHA Series Dimensions Table

Model No.		Shaft Diameter d (mm)	Major Dimensions (mm)							Weight (kgf)	Basic Load Ratings	
Standard Type	Both Sides Sealed		H	$h^{+0.02}$	W	w	L	l	S		C (kgf)	C_0 (kgf)
SLHA16	SLHA16-UU	16	36	22	45	30	28	16	M5	0.10	44	29
SLHA20	SLHA20-UU	20	41	25	50	35	30	16	M6	0.14	61	41
SLHA25	SLHA25-UU	25	48	30	60	40	32	16	M6	0.19	99	63
SLHA30	SLHA30-UU	30	54	33	68	48	34	20	M8	0.25	108	72

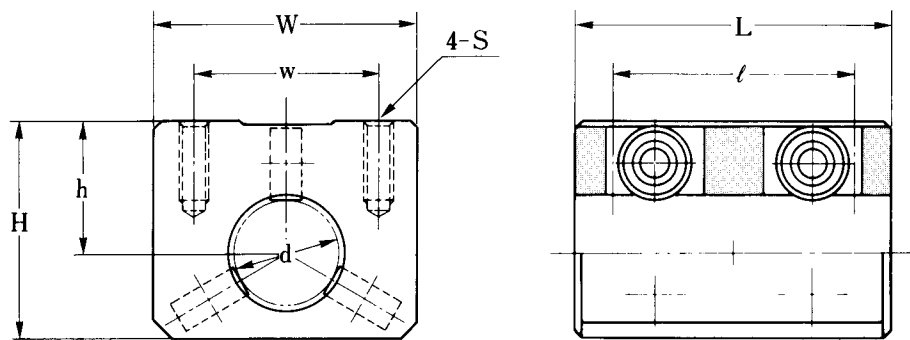


Table 105 : SLHB Series Dimensions Table

Model No.		Shaft Diameter d (mm)	Major Dimensions (mm)							Weight (kgf)	Basic Load Ratings	
Standard Type	Both Sides Sealed		H	$h^{+0.02}$	W	w	L	l	S		C (kgf)	C_0 (kgf)
SLHB16	SLHB16-UU	16	36	22	45	30	54	42	M5	0.20	82	58
SLHB20	SLHB20-UU	20	41	25	50	35	60	46	M6	0.27	114	82
SLHB25	SLHB25-UU	25	48	30	60	40	70	56	M6	0.46	184	126
SLHB30	SLHB30-UU	30	54	33	68	48	90	70	M8	0.70	202	144

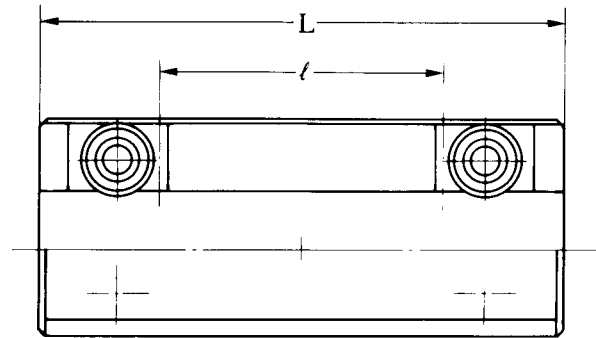
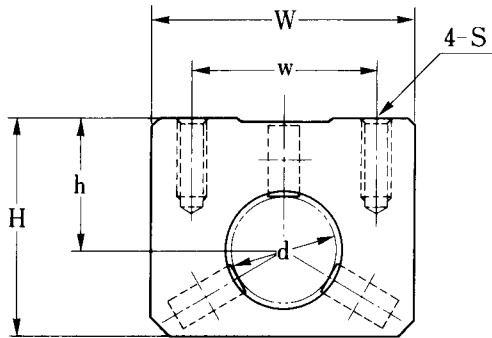


Table 106 : SLHW Series Dimensions Table

Model No.		Shaft Diameter d (mm)	Major Dimensions (mm)							Weight (kgf)	Basic Load Ratings	
Standard Type	Both Sides Sealed		H	$h^{+0.02}$	W	w	L	l	S		C (kgf)	C_0 (kgf)
SLHW16	SLHW16-UU	16	36	22	45	30	90	48	M5	0.33	82	58
SLHW20	SLHW20-UU	20	41	25	50	35	100	54	M6	0.45	114	82
SLHW25	SLHW25-UU	25	48	30	60	40	130	72	M6	0.78	184	126
SLHW30	SLHW30-UU	30	54	33	68	48	150	86	M8	1.10	202	144