

HS-4

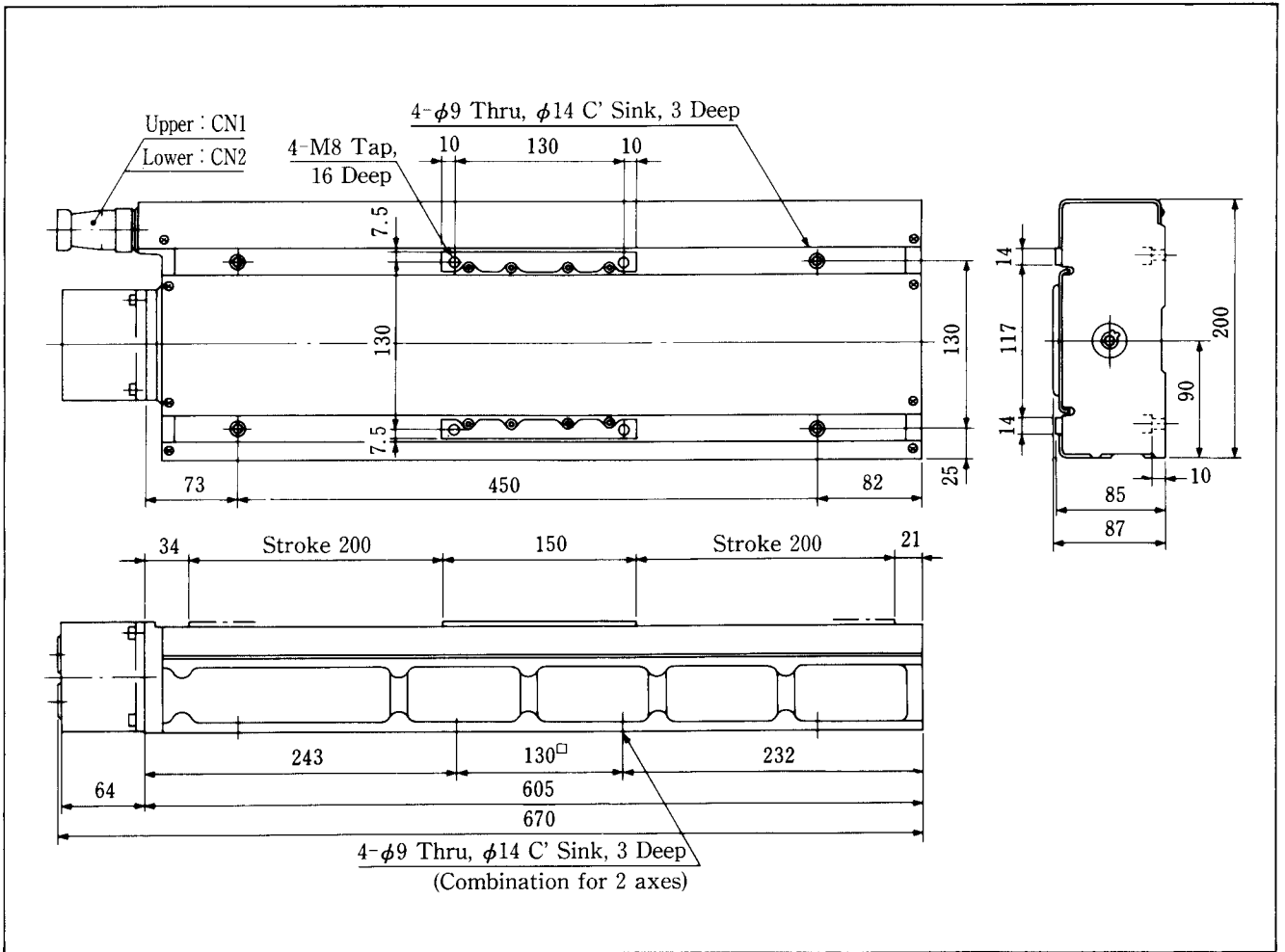


Table 172 : HS Series Specification

Item	Model No.	HS-1	HS-2	HS-3	HS-4
Stroke	[mm]	100	200	300	400
Repeatability	[mm]	±0.003			
Accuracy	[mm]	0.020	0.030	0.040	0.050
Backlash	[mm]	0.005			
Parallelism	[mm]	0.020	0.030	0.045	0.050
Maximum Speed	[mm/s]	400			
Resolution* ¹	[mm]	0.01			
Table Weight	[kgf]	7	8	10	16
Standard Load* ²	[kgf]	20			40
Maximum Load* ³	[kgf]	50			80
Inertia J* ⁴ × 10 ⁻⁴	[kgf·m ²]	0.525	0.550	0.575	1.05
Ball Screw Lead	[mm]	φ12, lead 10			φ15, lead 10
Motor		5 Phase Stepping Motor : PH569-A			5-Phase Stepping Motor PH596-A
Photo Sensor		EE-SX671			EE-SX671, 673

*¹ Resolution is 0.36deg/step.

*³ Maximum allowable load.

*² Standard load conforms to specifications.

*⁴ Motor inertia is included.

Note: 1. For HS-1, due to the relations of acceleration/deceleration and short stroke, the maximum speed is 300mm/s for 8kg or more load.

2. Two linear stages can be configured into a coordinate table. Refer to the user's manual for the details.

HS series can be configured into a coordinate table.

Combinations indicated in the following table are possible.

Table 173 : XY 2-Axes Combination Table

Lower Table	Upper Table
HS-1	HS-1, HS-2, HS-3,
HS-2	HS-1, HS-2, HS-3,
HS-3	HS-1, HS-2, HS-3,
HS-4	HS-1, HS-2, HS-3, HS-4

<Connector Pin Arrangement>

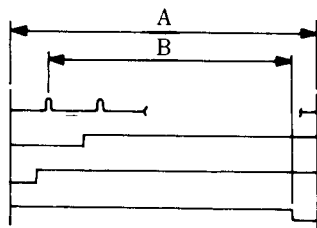
CN1 : Motor Connector SRCN6A25-16S(JAE)

Pin No.	1	2	3	4	5	6	7	8	9	10	11~15	16
Signal	A	\bar{A}	B	\bar{B}	C	\bar{C}	D	\bar{D}	E	\bar{E}	—	FG

CN2 : Sensor Connector SRCN6A25-24S(JAE)

Pin No.	1 ~ 6	7	8	9	10	11	12	13	14	15	16	17	18	19	20	21	22	23	24
Signal	—	Vcc	OUT	L	Ov	—	Vcc	OUT	L	Ov	Vcc	OUT	L	Ov	Vcc	OUT	L	Ov	Sealed
		ORG					PROX				OTR				OTL				

<Sensor Signal Position>



ORG Home (per 1 rev.)
 PROX Proximity
 OTL Over Travel (motor side)
 OTR Over Travel (opposite side)

Model No.	HS-1	HS-2	HS-3	HS-4
A	112max.	212max.	312max.	412max.
B	100min.	200min.	300min.	400min.