

Table 92 : GA-R Series Dimensions Table

Units : mm

Model No.	d	H ^{±0.2}	T	t	l ₁	l ₂	S	θ°	T ₀	G	P	Weight kgf/m
GA16R	16	33	28	5	8	15	φ5.5	50	9	50	100	2.38
GA20R	20	37	30	5	10	15	φ5.5	50	9	50	100	3.37
GA25R	25	44.5	36.5	5	12.5	17.5	φ6.5	50	9	50	100	4.91
GA30R	30	52	41	7	15	20	φ6.5	50	10	50	100	7.00

* Materials : Shaft SUJ-2, Supporter Aluminum

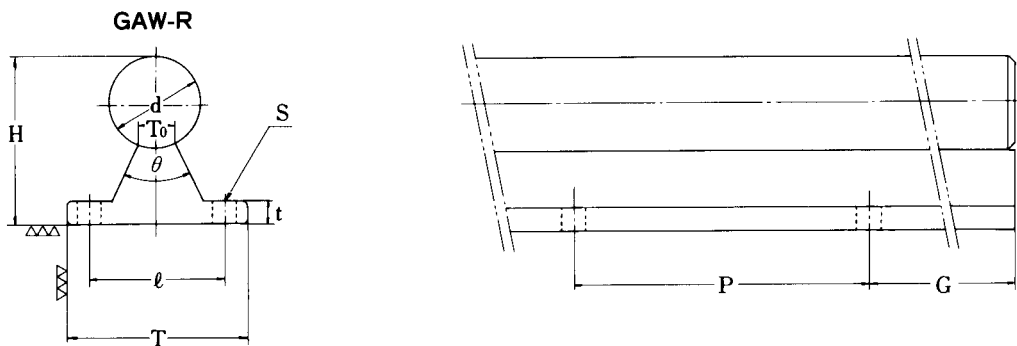


Table 93 : GAW-R Series Dimensions Table

Units : mm

Model No.	d	H ^{±0.02}	T	t	ℓ	S	θ°	T ₀	G	P	Weight kgf/m
GAW16R	16	33	40	5	30	φ5.5	50	9	50	100	2.59
GAW20R	20	37	40	5	30	φ5.5	50	9	50	100	3.49
GAW25R	25	44.5	48	5	35	φ6.5	50	9	50	100	5.27
GAW30R	30	52	52	7	40	φ6.5	50	10	50	100	7.38

* Materials : Shaft SUJ-2, Supporter Aluminum

Long Rail Connection Method

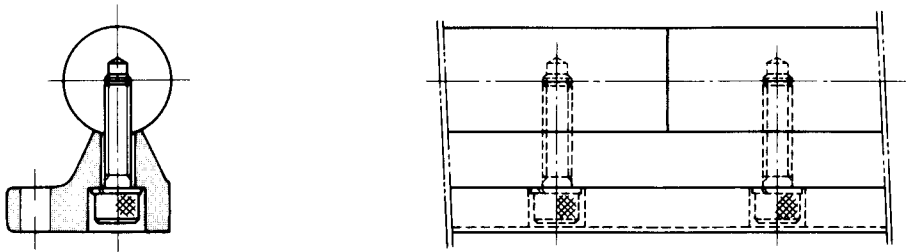


Fig. 28

In case a long rail say, 10 meters in length, is required, a widely accepted method is to use several rail joints in the overall length. The detailed extension method for **QZAK** linear guides, as shown in Fig. 28, is best-suited for long rail joints. Both round shafts are installed on a supporting block after making sure that the block's joints are not right under any shaft-coupled points. The shafts are then each anchored by bolts. The shafts can be automatically aligned afterwards leaving no offsets at the shaft's joints.